

## J - Parallel Motion Assembly (PMA) Steel Components

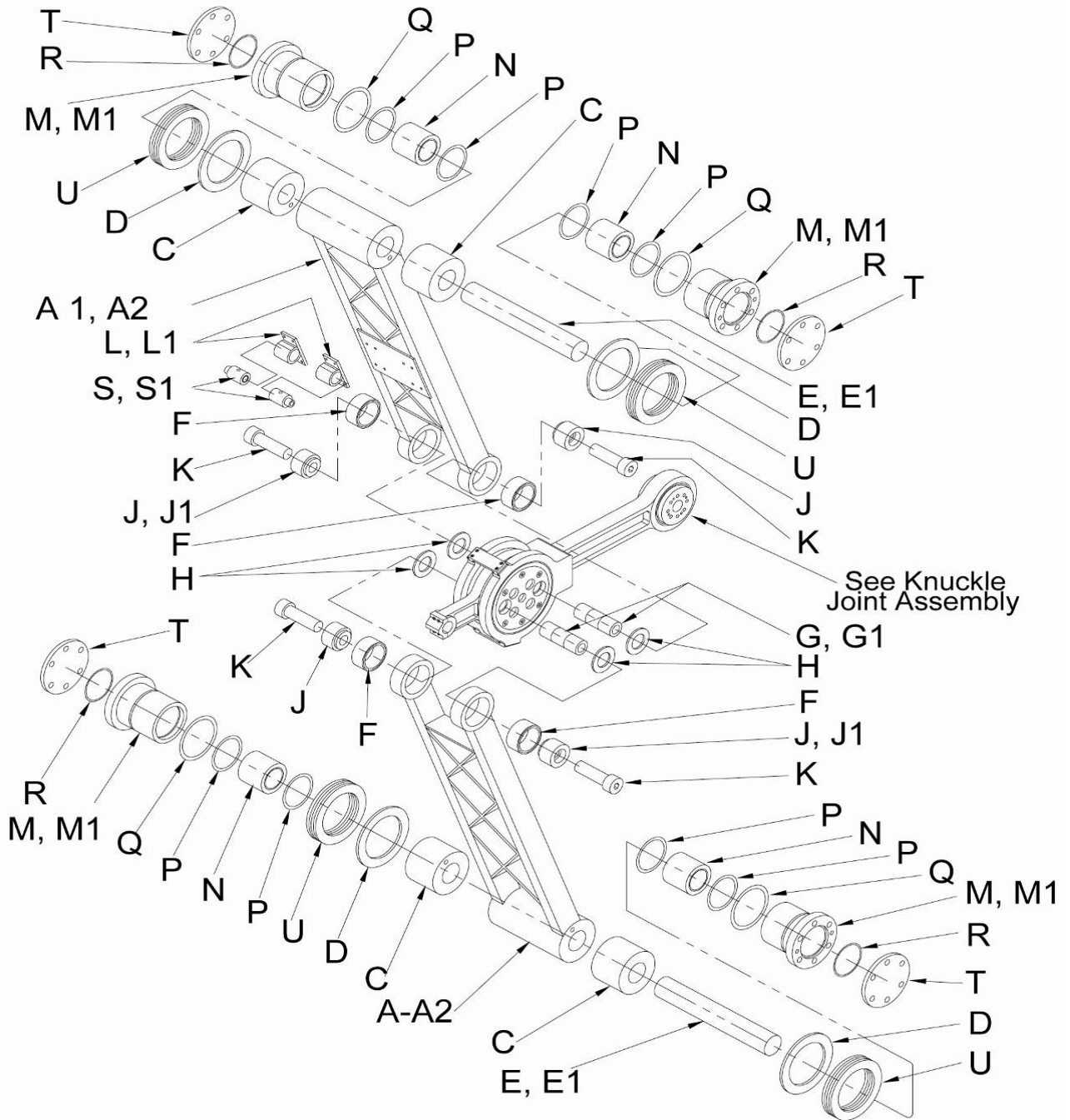
<p><b>Parallel Motion Assembly (PMA)</b>                  Includes Knuckle Joint Assembly, all components, lubrication and bearings except (2) Connecting Rod Bearings (R3352-A) which must be supplied by the customer. Parts listed with an asterisk (*) are not included in the assembly.  <b>New Parallel Motion Assembly with Clevis Style Connecting Link add</b></p>	
---	--

Key	Description	OEM Part No.	OKL Part No.	New Part Price	Repair Price
A	Upper Idler (Universal)	111933	OK-i0150		
A1	Universal Idler (Aluminum)		OK-i0210		
A2	Upper Idler-(SNK)		OK-i0003		
B	Lower Idler (Universal)	111933	OK-i0150		
*C	Idler Positioner	103575	OK-i2300		
*D	Master Shim (.200" Thick)	-	OK-i2500		-
E	Idler Shaft	102355	OK-C0400		-
*E1	Idler Shaft-(SNK)		OK-i0010		-
F	Idler Bearing	700040	OK-i3100		-
G	Journal Pin	150651	OK-i1500		-
G1	Journal Pin-(SNK)		OK-i1502		
H	PMA Spacer	114532	OK-i0800		-
J	Journal Peg	102285	OK-i1600		-
J1	Journal Peg-(SNK)		OK-i0002		
K	Journal Pin Bolts	742790	OK-i2400		-
*L	Std. Rotary Union Housing	-	OK-i0700		-
L1	Large Rotary Union Housing	-	OK-i2200		-
*M	Bearing Cartridge	102353	OK-C0300		-
M1	SNK to Rag. Brg Cartridge	-	OK-C0350		-
*N	Bearing Standard	700050	OK-C0600		-
*P	Cartridge Snap Ring	770040	OK-C0700		-
*Q	Cartridge O-Ring	770920	OK-C0800		-
*R	Cartridge Face O-Ring	770900	OK-C0900		-
*S	Std. Rotary Union	-	OK-i0705		-
S1	Large Rotary Union	-	OK-i2205		-
*T	Bearing Cartridge Cap	114683	OK-C1000		-
*U	Shim Pack (Includes Item "D")	114682	OK-i2550		-
W	Journal Alignment Tool		OK-i0502		-

**Note: See page H & H-1 for new aluminum idlers.**

Options	Price
<p><b>Rebuild Existing Parallel Motion Assembly</b>                  Includes all bearings except (2) Connecting Rod bearings (R3352-A) which must be supplied by the customer. Includes all lubrication lines and fittings.  <b>If Journal Halves (set) need re-chroming and grinding add</b></p>	-
<b>Lubrication of Upper or Lower Idler add</b>	-
<b>Modify Upper or Lower Idler to Universal Idler</b>	-

# Parallel Motion Assembly (PMA) Steel Components



**Knuckle Joint Link Assembly**

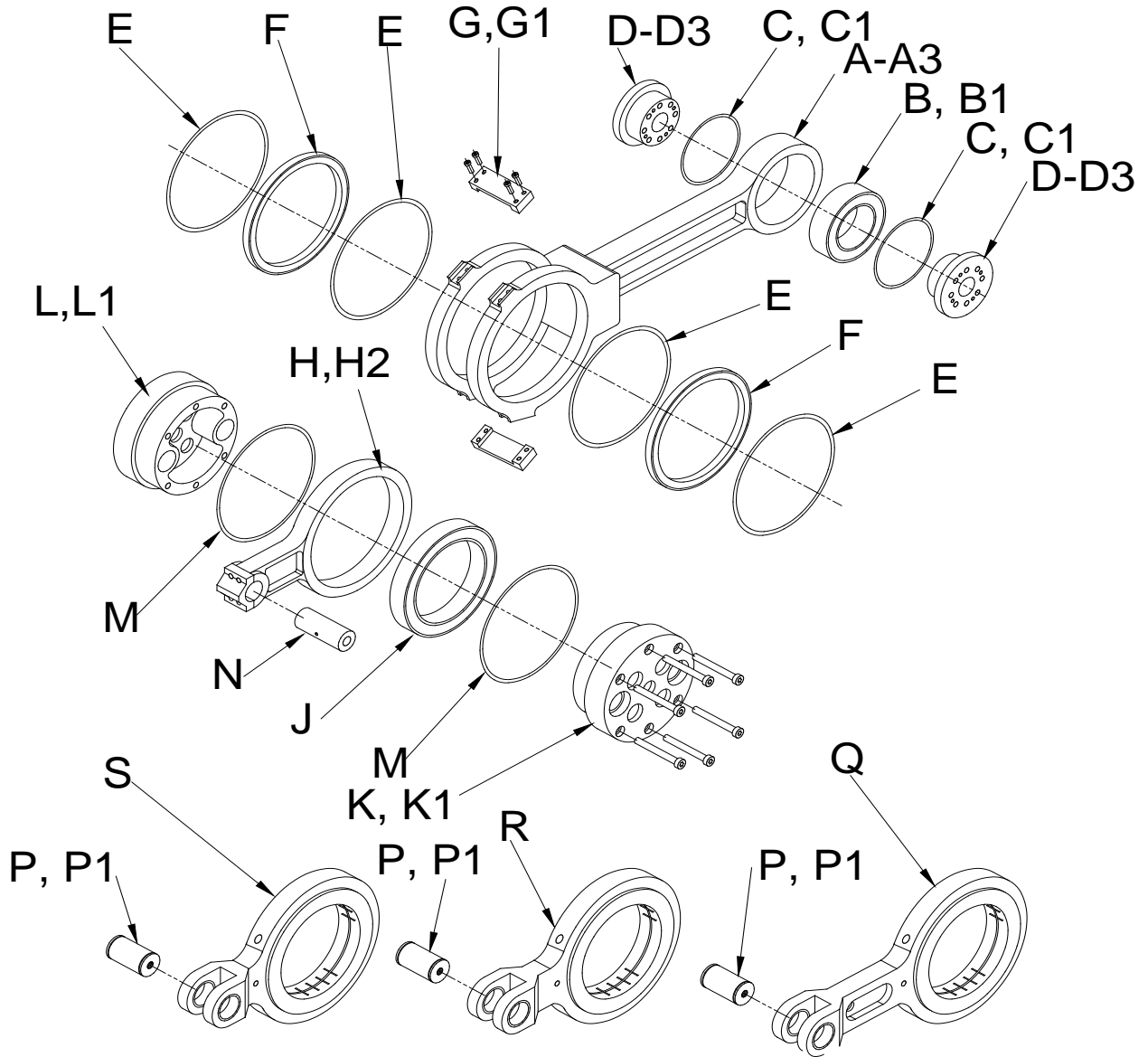
<b>New Knuckle Joint Assembly (PMA w/o Upper or Lower Idlers)</b> Includes all components, lubrication and bearings except (2) Connecting Rod Bearings (F) (R3352-A) which must be supplied by the customer. <b>New Parallel Motion Assembly with Clevis Style Connecting Link add</b>	
--	--

Key	Description	OEM Part No.	OKL Part No.	New Part Price	Repair Price
A	Connecting Rod - 18-1/2" - 21"	111333	OK-i2900		
A1	Connecting Rod - 24"	111511	OK-i0300		
A2	Connecting Rod - 26-1/2"	111511	OK-i1000		
A3	SNK Connecting Rod - 24"	-	OK-i0302		
B	Crank Pin Half Bearing - STD	700100	OK-i3200		
B1	Crank Pin Half Bearing - SNK		OK-i4000		
C	Connecting Rod Snap Ring - STD	770010	OK-i2000		
C1	Connecting Rod Snap Ring - SNK		OK-i4005		
D	Crank Pin Half (1" bore, 3/8" screws)	150415	OK-i1700		
D1	Crank Pin Half (1 1/4" bore, 1/2" screws)		OK-i0008		
D2	Crank Pin Half (1 1/4" bore, 7/16" screws)		OK-i0006		
D3	Crank Pin Half (SNK) - 38 mm		OK-i0001		
E	Connecting Rod Snap Ring	770000	OK-i1900		
F	*Con. Rod Bearing (Rework ONLY)	*701441	*OK-i3300 R	N/A	
G	Connecting Rod Bridge (top & bottom)	150425	OK-i0600		
G1	Bridge w/ Lube Holes	-	OK-i0650		
**H	Connecting Link - 18-1/2", 20", 26 1/2"	102548	OK-i1100		
**H1	Connecting Link - 24"	102548	OK-i0400		
**H2	Connecting Link - 24" SNK	102547	OK-i0000		
**H3	Connecting Link (with Bronze bushing) 18.5", 26.5" Stroke		OK-i1100A		
**H4	Connecting Link (with Bronze bushing) 24.0" Stroke		OK-i0400A		
J	Connecting Link Bearing	700242	OK-i3400		
K, L	Set Journal Half - Operator Side (Ref)	102283	OK-i0500		
K1, L1	Set Journal Half - (SNK) Operator Side		OK-i0501		
M	Connecting Link Snap Ring	770910	OK-i2100		
N	Wrist Pin - for Ram Carriage/Ram Block	114835	OK-A1320		
P	F-B-R Wrist Pin w/ Snap Rings	111644	OK-J4630		
P1	Pin Assembly for 1 1/8" Connection	-	OK-Q0913		
**Q	F-B-R Connecting Link - 18-1/2"	113815	OK-i4100		
**R	F-B-R Connection Link - 21"	113827	OK-i3550		
**S	F-B-R Connecting Link - 24"-26.5"	113886	OK-i4900		
T	Journal Shim Pack	-	OK-i0510		

\*\* H, H1, H2 = "New" Con Links Do Not Have Bushing, "Repair" Con Links Do Come With Bronze Bushing

Options	Price
Modify Connection Rod for Lube Linkage	Call for quote
Lubrication of Connecting Rod add	
Lubrication of Connecting Link add	

# Knuckle Joint Link Assembly



Assembly

**High Speed Lubrication Linkage Assembly**

<b>High Speed Lubrication Linkage Assembly</b>	
Includes: All component parts, bearings, fittings, injectors, and seals.	

Key	Description	OEM Part No.	OKL Part No.	New Part Price	Repair Price
*A1	Lube Linkage Arm (7.88") Groove in Link (old)	-	OK-Q0310		
*B	Lube Linkage Arm (7.00") Groove in Link (old)	-	OK-Q0320		-
*C	Lube Linkage Arm (6.25") Groove in Link (old)	-	OK-Q0315		-
*D	Port Shaft	-	OK-Q0350		-
*E	Port Shaft O-Rings Groove in link (lube linkage arm)	-	OK-Q0500		
**A1	Lube Linkage Arm (7.88") Groove in Link (new)	-	OK-Q0311		
**B	Lube Linkage Arm (7.00") Groove in Link (new)	-	OK-Q0321		-
**C	Lube Linkage Arm (6.25") Groove in Link (new)	-	OK-Q0316		-
**D	Port Shaft	-	OK-Q0351		-
**E1	Port Shaft O-Rings Groove in link (lube linkage arm)	770520	OK-Q0501		
F	Port Shaft Retaining Clip	109473	OK-Q0370		-
G	Bearing Spacer	109472	OK-Q0360		-
H	Bearing	700186	OK-Q0520		-
J	Oil Seal	773510	OK-Q0530		-
K	Flange Bushing	700187	OK-Q0510		-
L	Idler Link Base	114276	OK-Q0330		-
L1	Idler Link Base (Aluminum Idlers )	-	OK-i0211		-
M	Rod Link Base	109470	OK-Q0340		-
N	Inj. Mounting Plate (3 Block)	109793	OK-Q0380		-
N1	Inj. Mounting Plate (4 Block)	111334	OK-Q0390		-
N2	Inj. Mounting Plate (5 Block)	112730	OK-Q0400		-
P	Injector (3 block)	769000	OK-Q0550		-
P1	Injector (4 Block)	759095	OK-Q0560		-
P2	Injector (5 Block)	769143	OK-Q0570		-
Q	Inj. Safety Strap (3 Block)	109794	OK-Q0410		-
Q1	Inj. Safety Strap (4 Block)	111335	OK-Q0420		-
Q2	Inj. Safety Strap (5 Block)	112731	OK-Q0430		-

**We occasionally have reconditioned parts for sale, call for pricing and delivery.**

\*Gen 1

\*\*Gen 2

# High Speed Lubrication Linkage Assembly

